

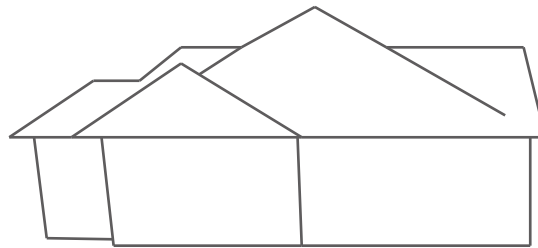
URBAN FARMER

"An edible yard that brings the pollinators home"

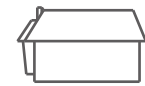
Maggie Crowley

December 02, 2016

MSU / Plant Biosciences Building / Room 108



URBAN farmer



Performance



High use of edible plants

69%



High use of pollinator - friendly plants

63%

(118%)



High maintenance

5-7
hours



Low water use reduction

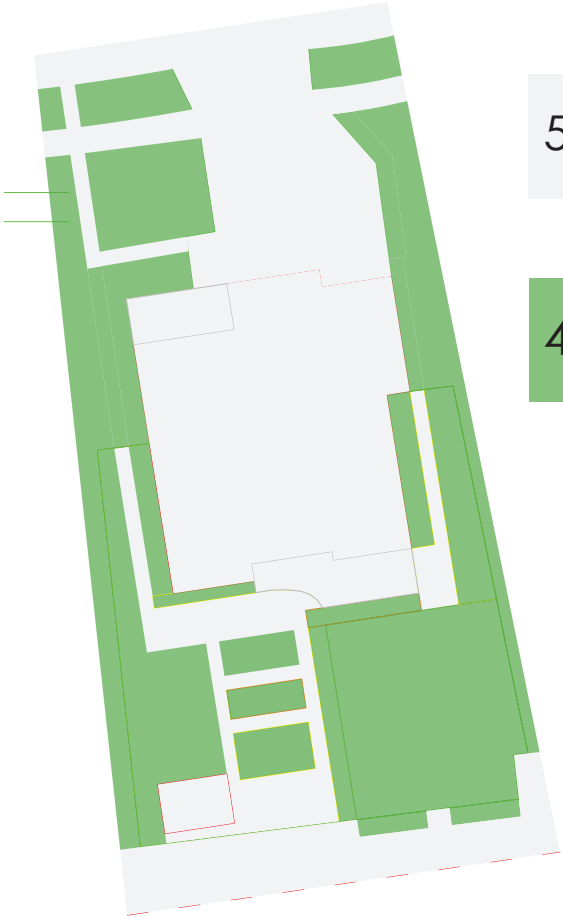
40%

Schematic Plan



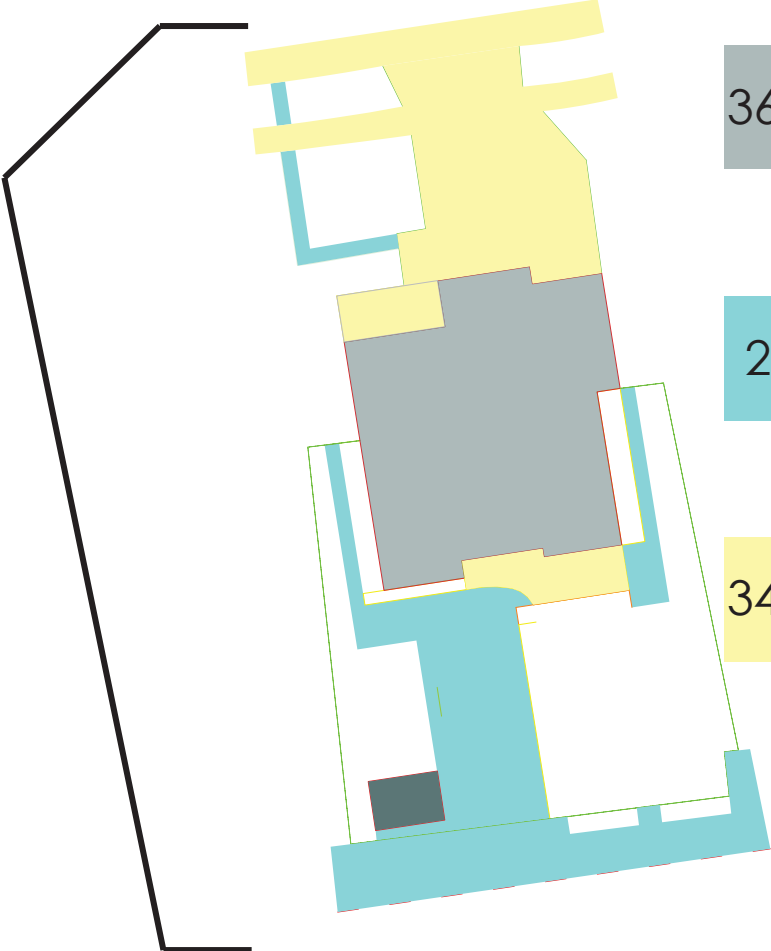
Surface Type Diagram

parcel size: 9852 square feet



56% hardscape

44% vegetated

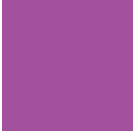
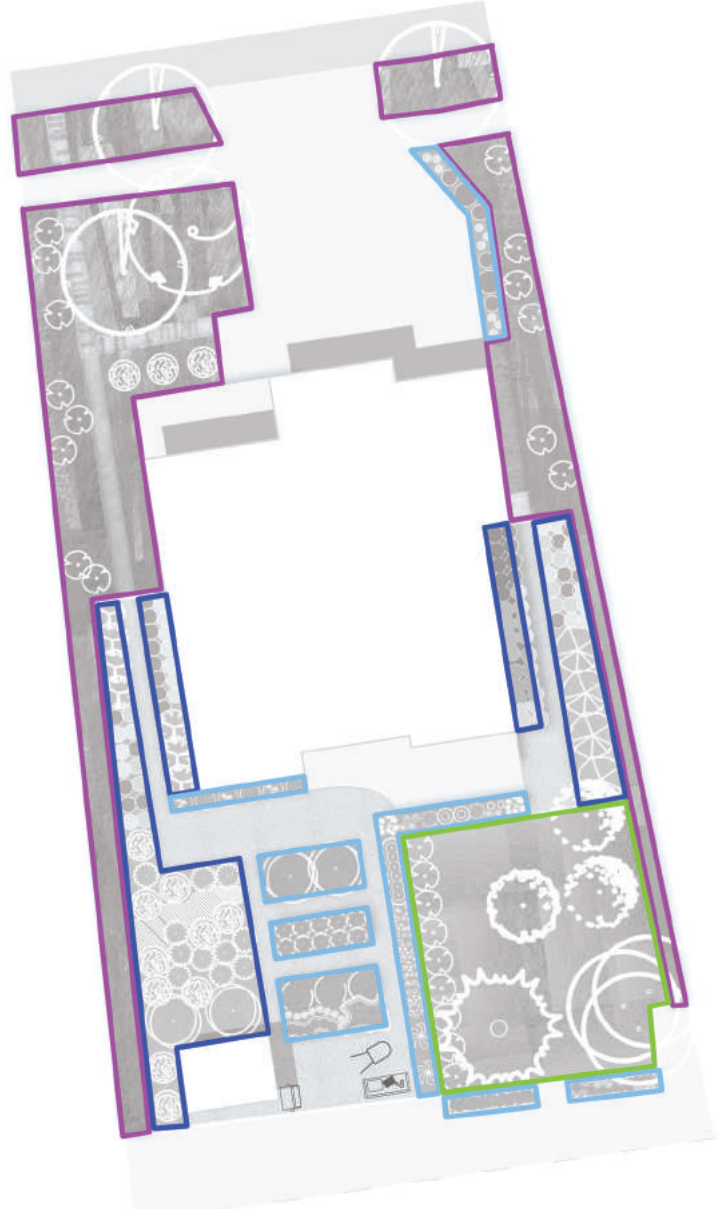


36.5% roof

29% pervious hardscape

34.5% concrete & asphalt

Vegetation Diagram



MT native grass mix



Shrub / perennial

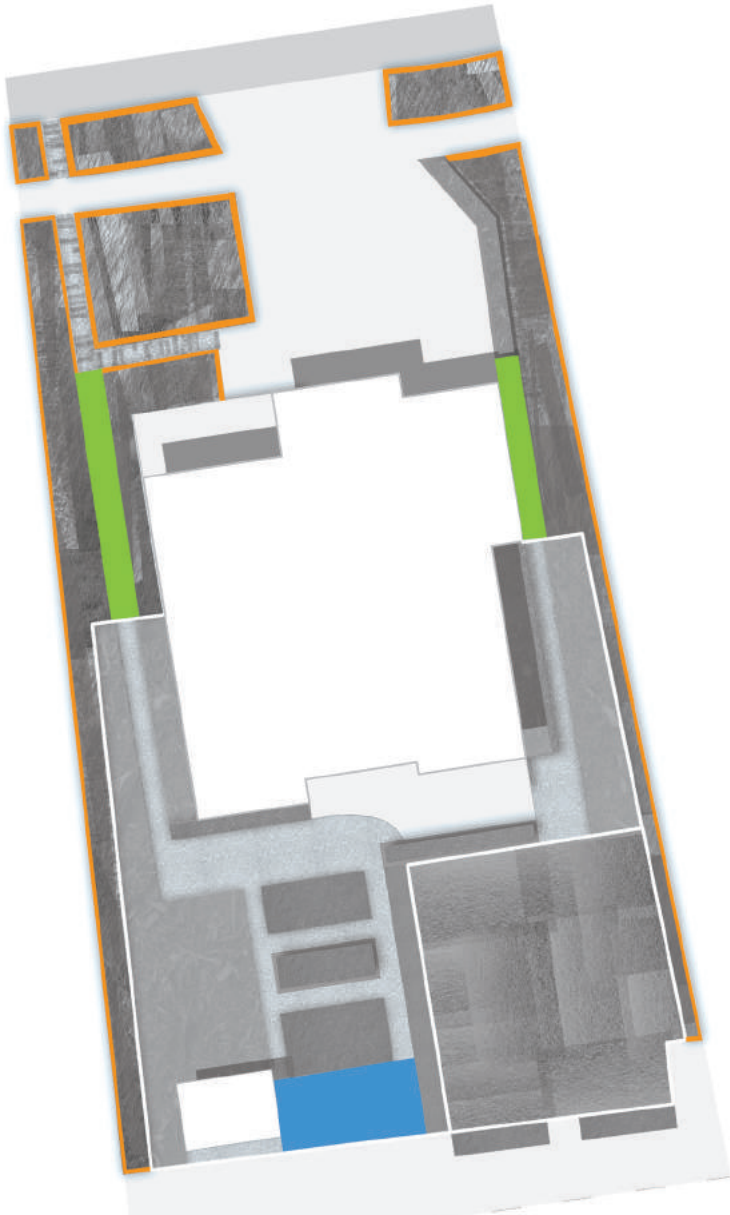


Edible / herb



Turf

Cues to Care Diagram



Thin mow-strip



Mow strip used as informal path

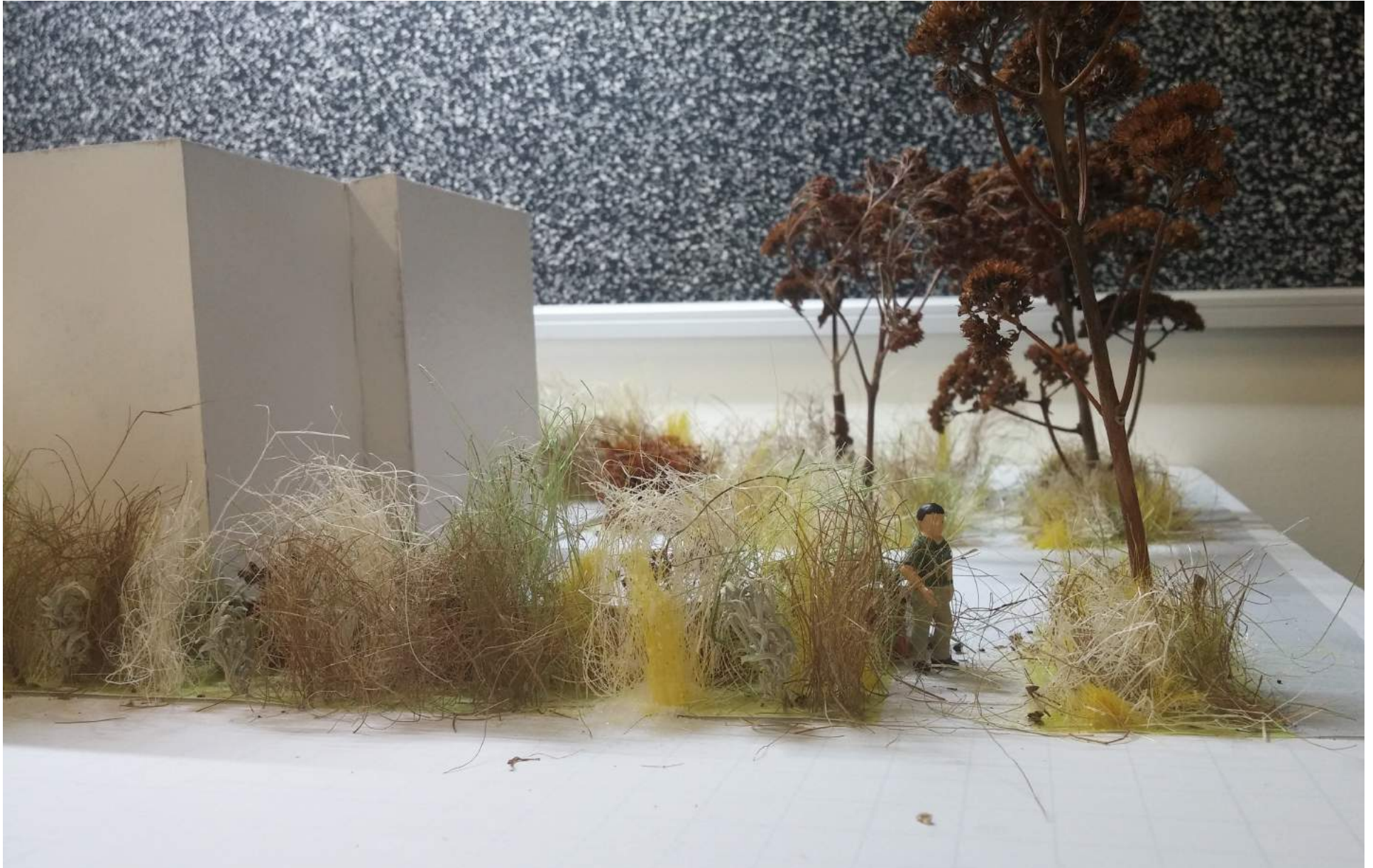


Workstation

other cues to care observed:

- fences
- mown turf
- visible, crisp edges defining borders of patches
- colorful flowers

Model - front yard



Model - back yard



Model - side yards



Tea Time



N↑



STREET

SIDEWALK

Tea Time is an aesthetically-pleasing, functional raised bed. Entertain your guests with a fresh cup of tea, straight from the garden.

(\$300-\$1400)



Catnip
(*Nepeta cataria*)

- attracts bees & butterflies
- drought tolerant
- soothing herbal tea, minty



Chamomile
(*Matricaria recutita*)

- attracts bees & butterflies
- calming herbal tea, sweet



Pale Purple Coneflower
(*Echinacea angustifolia*)

- attracts butterflies
- drought tolerant
- immune system - boosting tea, floral taste

Strawberry Salad Patch



N↑



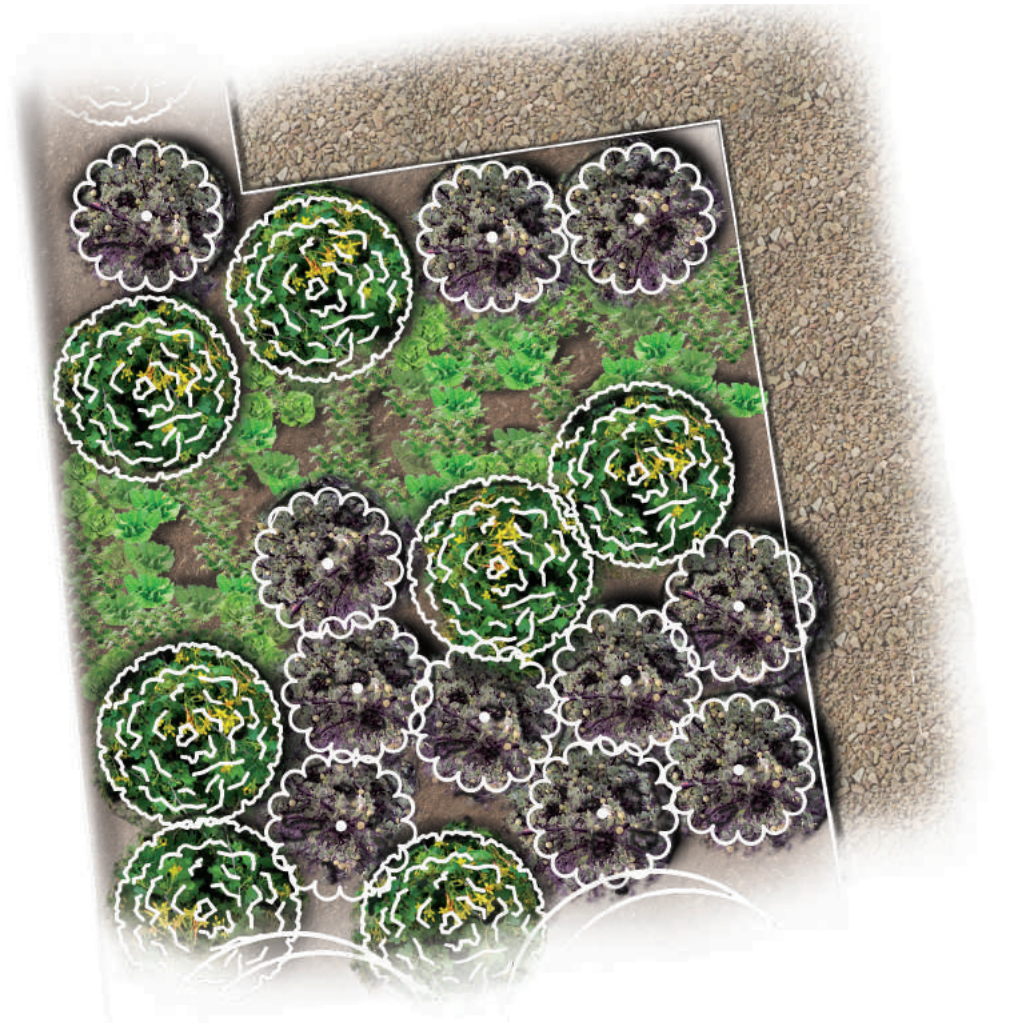
Lettuce (*Lactuca sativa*)



Spinach (*Spinacea oleracea*)



Strawberry (*Fragaria spp.*)



Strawberry Salad Patch is a great alternative to traditional groundcovers that gets your kids interested in homegrown foods.

(\$40-\$100)

Exploratory Path



NT

Exploratory path... more than just a shortcut to the house.

(\$100-\$300)



PATH

DRIVEWAY



1. DIY path



2. Yarrow

(*Achillea millefolium*)



3. Idaho Fescue

(*Festuca idahoensis*)



5. Lewis's Flax

(*Linum lewisii*)



4. Blue Grama

(*Bouteloua gracilis*)

6. Slender Wheatgrass

(*Elymus trachycaulus* ssp. *trachycaulus*)



7. Pale Purple Coneflower

(*Echinacea angustifolia*)



8. Bluebunch Wheatgrass

(*Pseudoroegneria spicata* ssp. *spicata*)

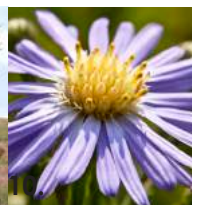


9. Basin Wildrye

(*Leymus cinereus*)

10. Smooth Aster

(*Aster laevis*)



Comparing Performance - Water

Performance	Baseline	Urban Farmer
gallons / month used	25,200	10,100
gallons / month over or under allowance	4,150	10,950
cost / month for irrigation	\$122	\$52

Comparing Performance - Vegetation / Soil

Performance	Baseline	Urban Farmer
total vegetated coverage = edible	0%	69%
total vegetated coverage = pollinator-friendly	19%	63%
property value increase / year	\$260	\$730
gallons of stormwater interception / year	600	7,800

Comparing Performance - Human Health & Well-Being

Benefit	Baseline	Urban Farmer
Restorative spaces	covered porches	view from windows covered porches raised beds
Culturally significant plants	turfgrass	MT native plants Bluebunch Wheatgrass turfgrass
Learning opportunities	none	Plug-and-plays
Human comfort zones	covered porches turf area	covered porches work area turf area edible area
Play spaces	turf area	turf area nature playground

Comparing Performance - Materials & Energy

Performance	Baseline	Urban Farmer
pounds of fertilizer applied to turf / year	25	5
hours / year spent mowing turf	20	4.5
yearly CO ₂ emissions from mowing turf (lbs)	433	27

Making Urban Farmer a reality

Upfront plant costs



Maintenance



Soil



Pollinator homes

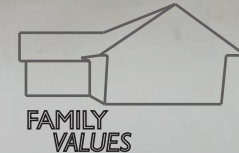
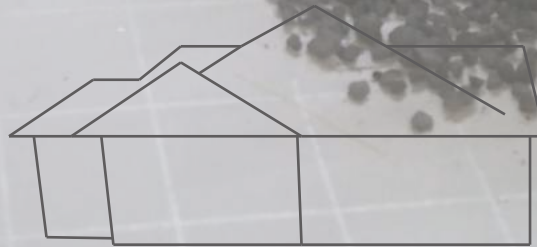


Urban Farmer

“An edible yard that brings the pollinators home”

URBAN
FARMER

THANK YOU
QUESTIONS? / COMMENTS?



THE MINIMALIST

"Spend less time and money taking care of your landscape and simply enjoy it."

Haley Craven

December 2, 2016

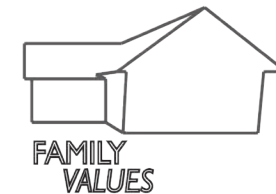
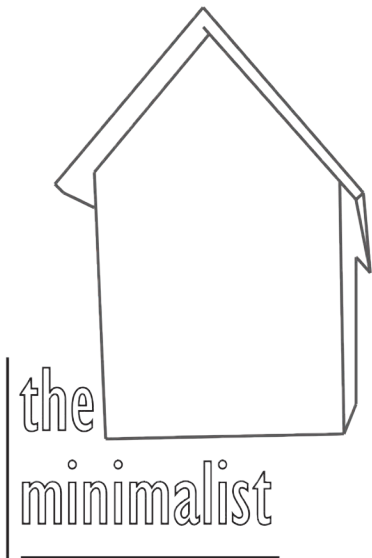
MSU / Plant Bioscience Building / Room 108



Design Concept:

This design is based upon the rotation of seasons throughout a landscape and having seasonal interest every direction you look.

It uses curvilinear form to create the idea of the cycle through the different seasons.



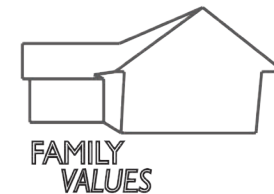
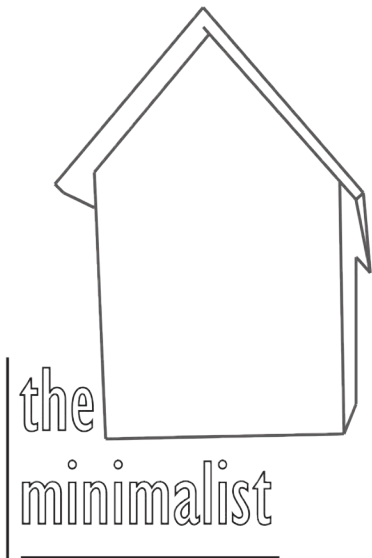
PERFORMANCE

THE MINIMALIST

goals and benefits



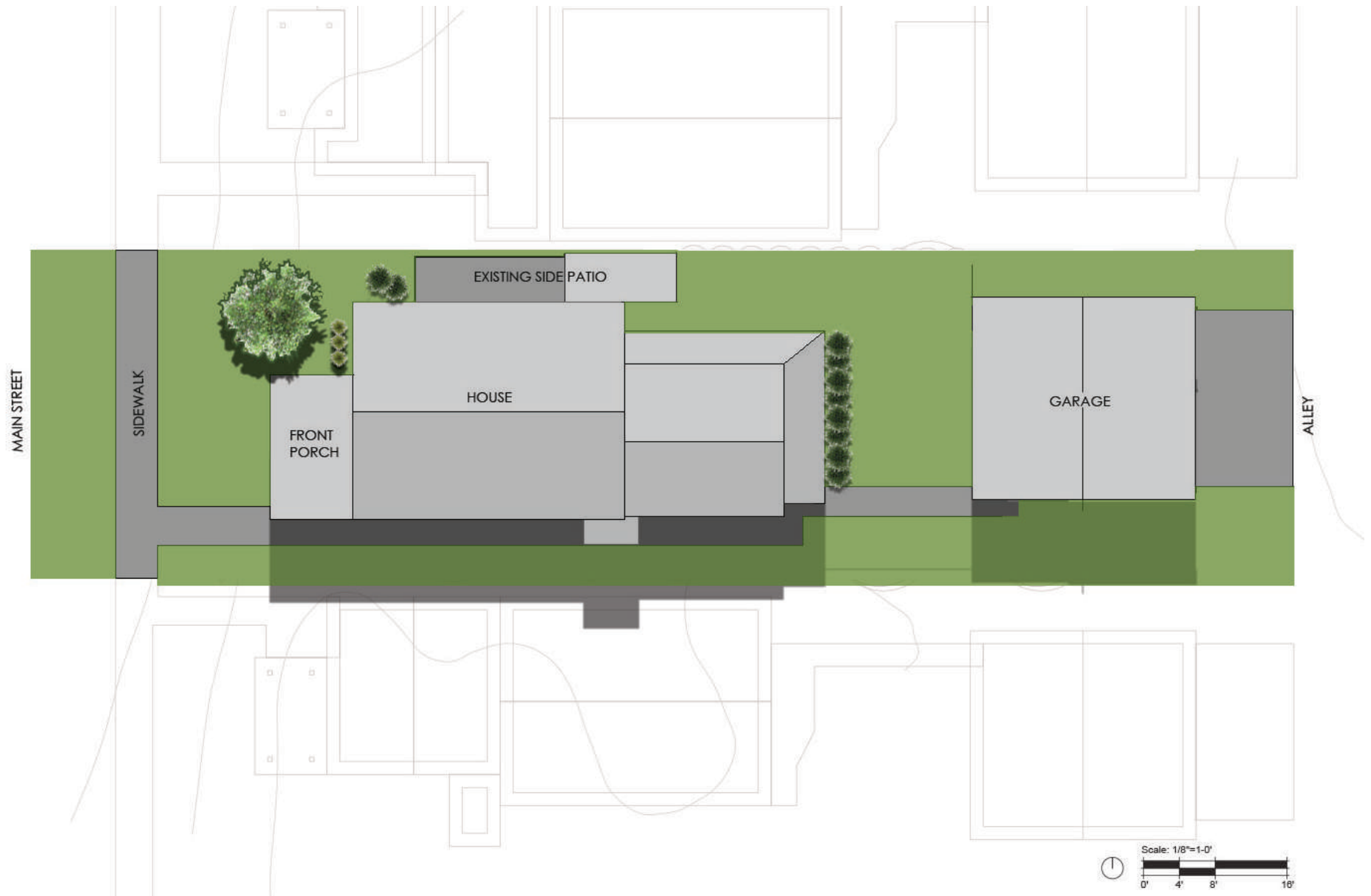
- Site management through plant diversity
- Drought tolerant plant species
 - Most found in the City of Bozeman Planting and Outdoor Watering Guide
- Small but high impact on human senses



EXISTING plan view

THE MINIMALIST

- No biodiversity
- Alley loaded
- Small setbacks



PROPOSED plan view

THE MINIMALIST

- 100% turf reduction
- Human function
- Layers of plantings



PROPOSED schematic design

- ## THE MINIMALIST
- Curvilinear design
 - On ground plane, tree placements, hardscape



PROPOSED

design performance

BEFORE

- 46540 gallons of water used a month
 - Over EPA Water Budget monthly allowance by 38659 gallons
- Existing tree benefits
 - 1700 gallons storm water intercepted/year
 - 470 lbs of CO2 reduction
 - Increases property value \$94.22
- 170 square feet of relaxation space in front yard/side of house

THE MINIMALIST

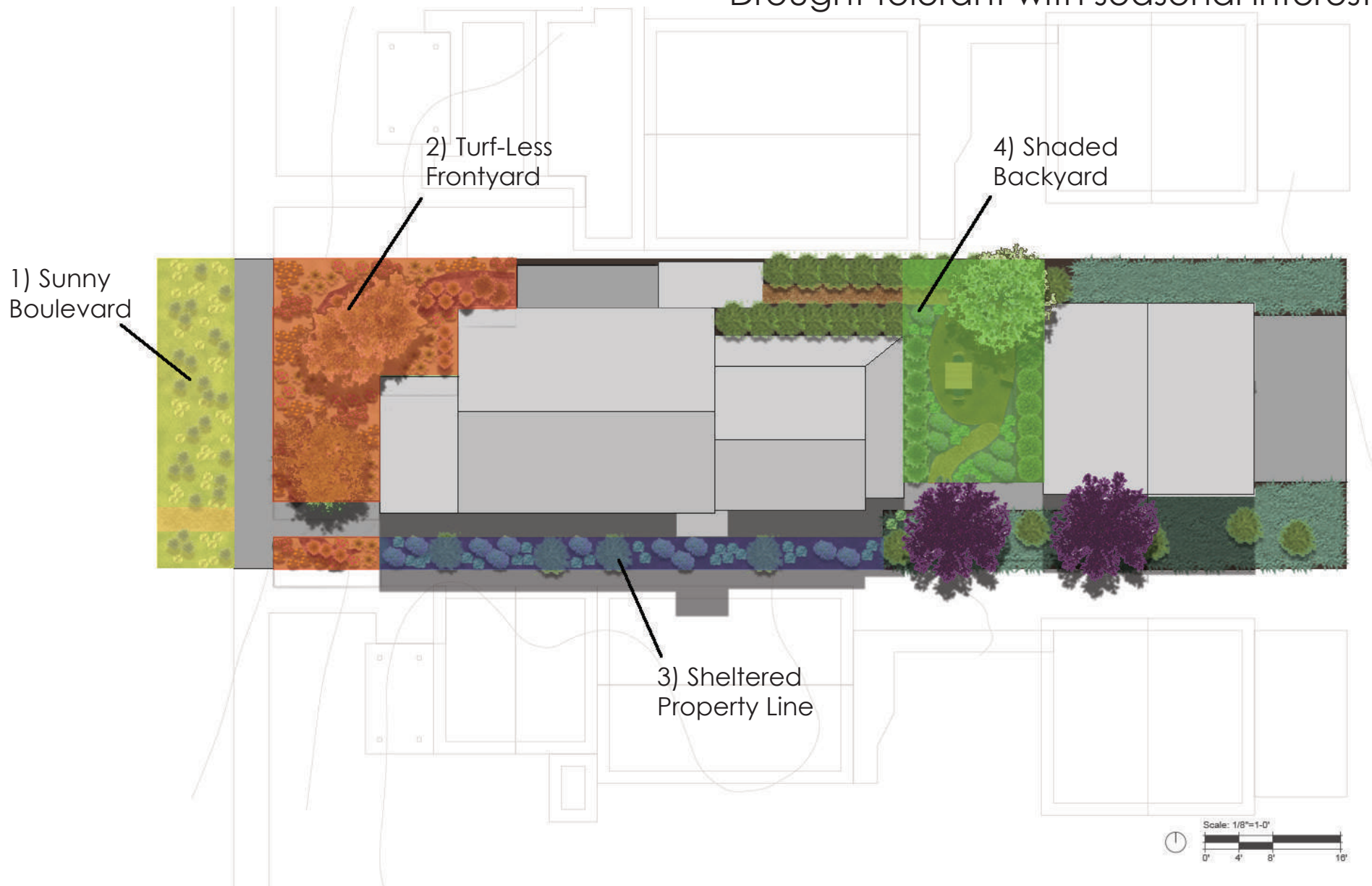
AFTER

- 1892 gallons of water used a month
 - Under EPA Water Budget monthly allowance by 5989 gallons
- New tree benefits
 - 1900 more gallons storm water intercepted/year
 - 886 more pounds of CO2 sequestration
 - Increases property value \$258.31
- Additional 137 square feet of relaxation space in back yard

APPLICATION ideas

THE MINIMALIST

- Plug into own landscape
- Sun levels, locations, area sizes
- Drought tolerant with seasonal interest



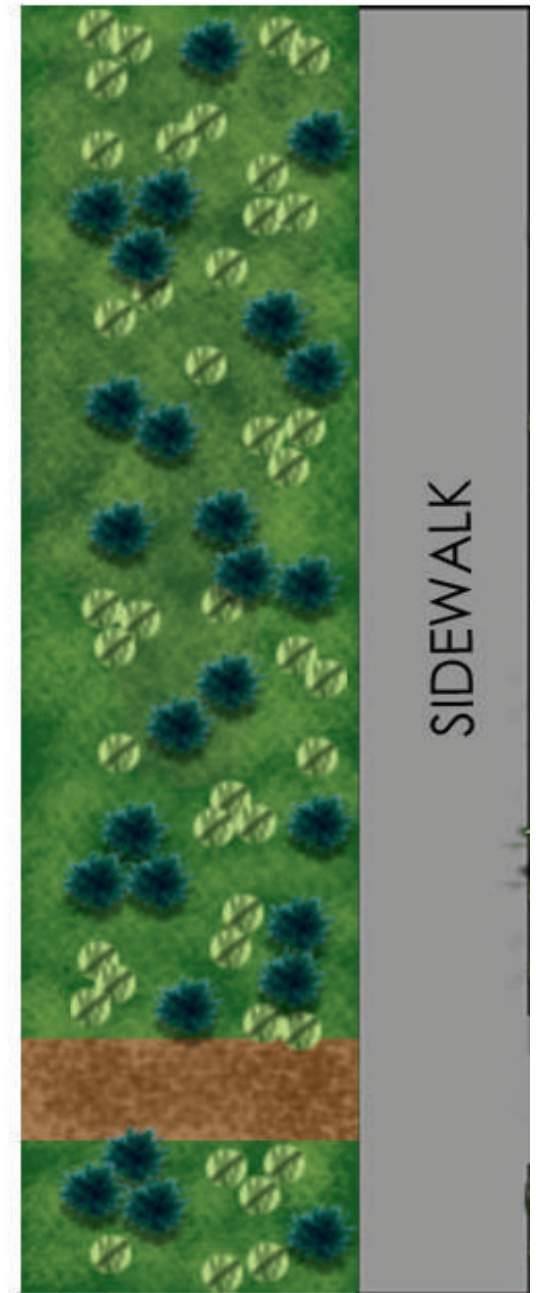
1) SUNNY

boulevard WINTER

THE MINIMALIST



- Low maintenance
- Can still shovel snow
- Still “grassy” boulevard



Plan NTS

2) TURF-LESS frontyard SPRING

THE MINIMALIST



- Continual flowering
- Creates privacy
- Plant layers
- Conventional plants in different way



3) SHELTERED property line SUMMER

THE MINIMALIST

- Collaboration with neighbors
- Shade tolerant
- Low growing



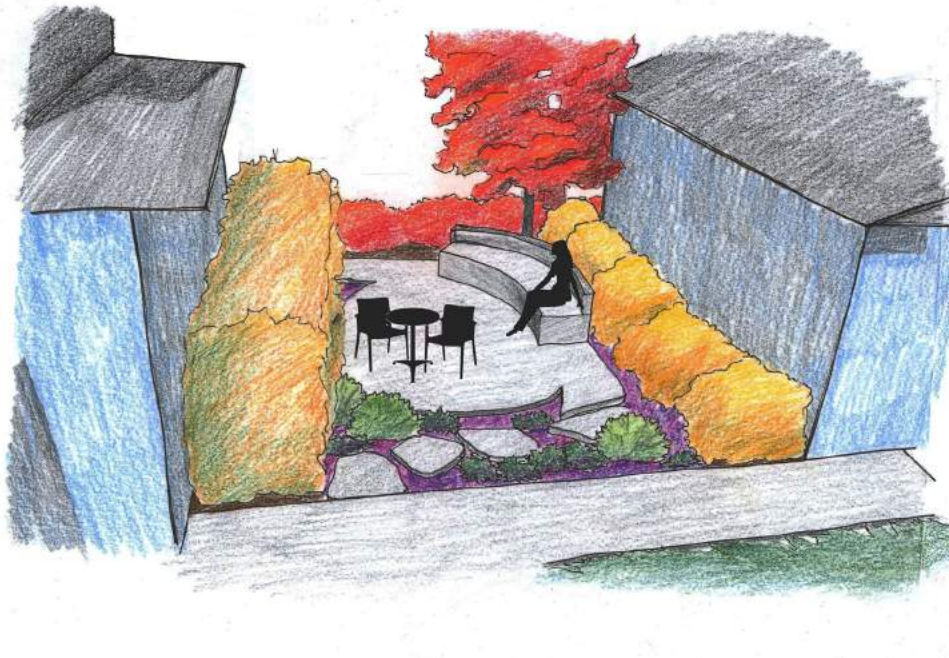
Plan NTS



4) SHADY

backyard

FALL

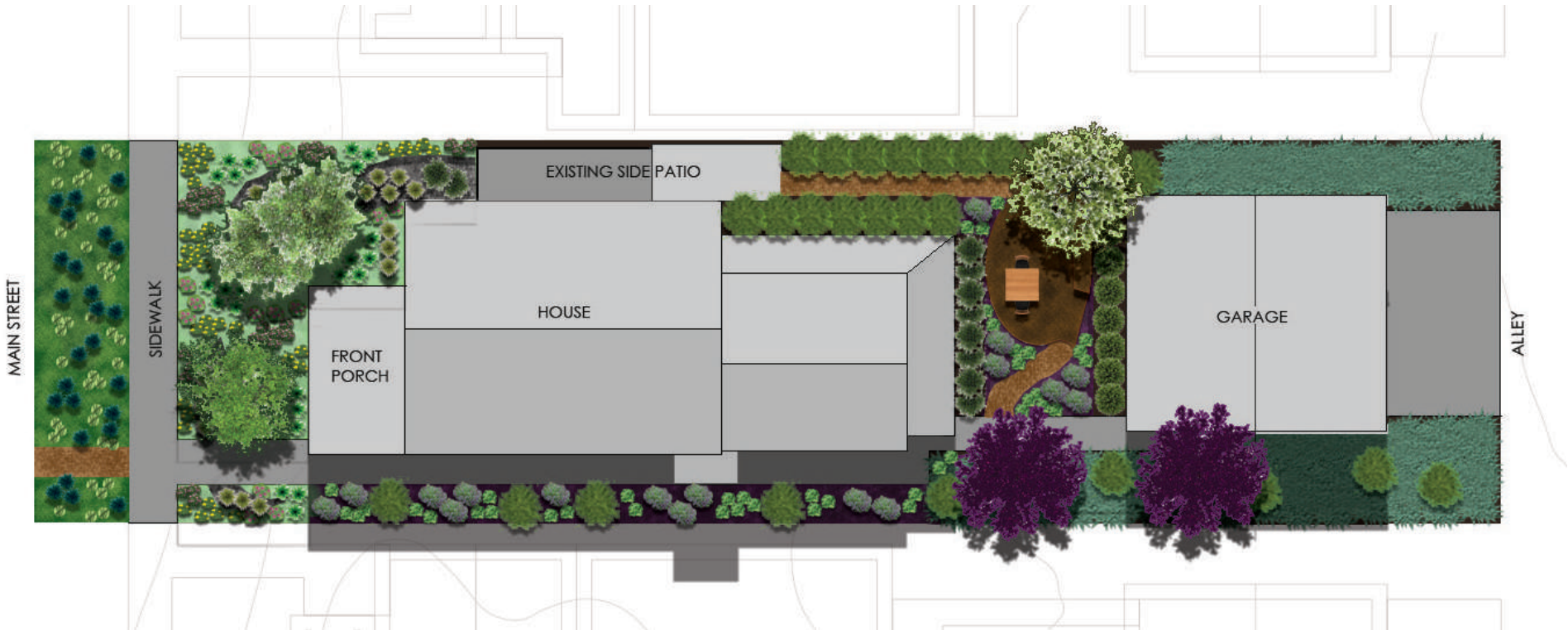


THE MINIMALIST

- Added privacy
- Trees help with seclusion
- Low maintenance and more usable
- Always shaded



THE MINIMALIST



THANK YOU!

the minimalist



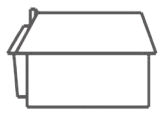
KEEP MT *wild*



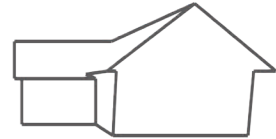
the *entertainment zone*



URBAN *farmer*



native beauty



FAMILY VALUES



THE SURVIVOR

THE SURVIVOR

SUSTAINABILITY | INDEPENDENCE | CONSERVATION

Elizabeth Ritchie
HORT 432
December 02, 2016
MSU
Plant Biosciences Building
Room 108



The survivor is a design concept meant to allow the homeowner the ability to produce food and medicinal plants on their property with minimal water consumption and labor input. Native plants are prioritized over non-natives in the spirit of creating a more region-specific urban forage experience.

The homeowner should have the ability to produce their own food but not feel constrained by the need to.

Fun, exploratory elements such as a mushroom garden, or forage patio can be implemented as site conditions allow but do not directly contribute to the central themes of independence and sustainability.

PERFORMANCE TARGETS

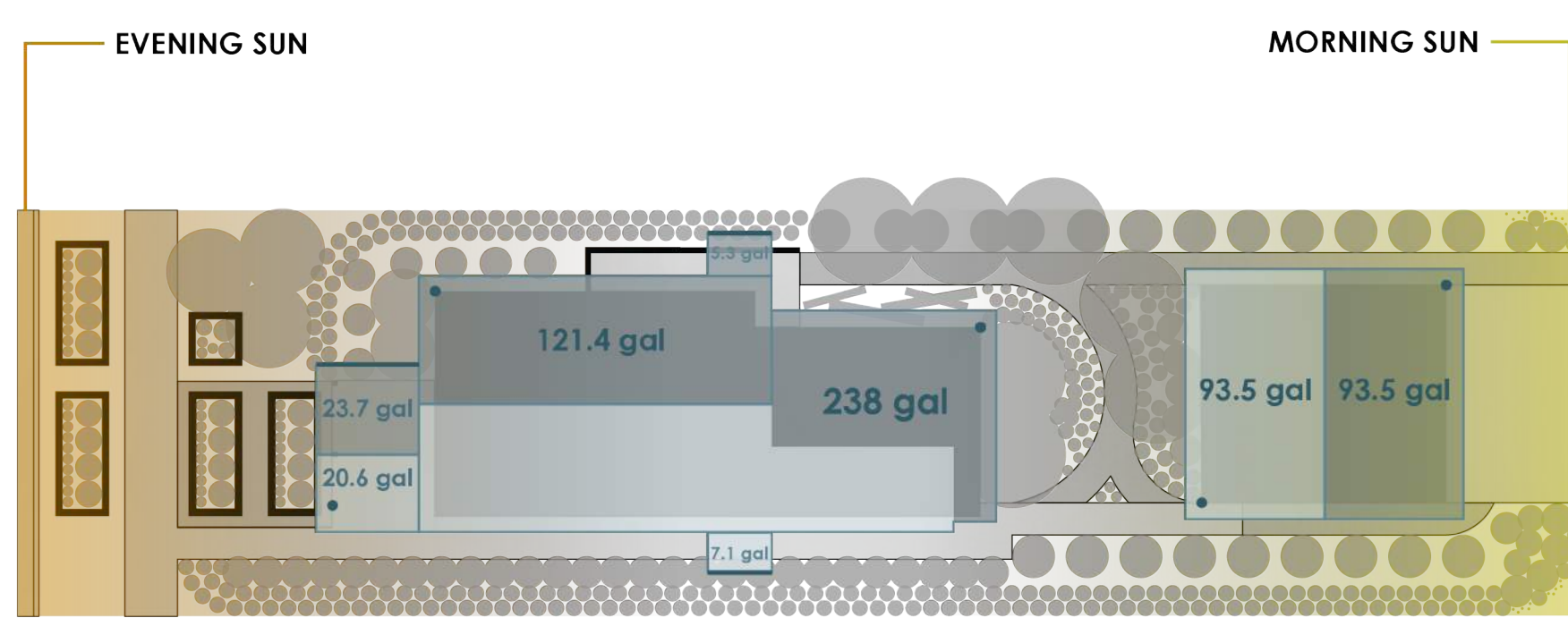
The design performance targets for this scenario were set with the central themes in mind. Water usage is kept at a minimum while pollinator friendly and edible plants were maximized to support sustainability and resource independence. Maintenance needs are minimized so that the urban food production efforts didn't take over the home-owner's life, leaving no room for other activities.

- high water use reduction (81%)
- high edible vegetation (84%)
- 6+ hours / week maint.

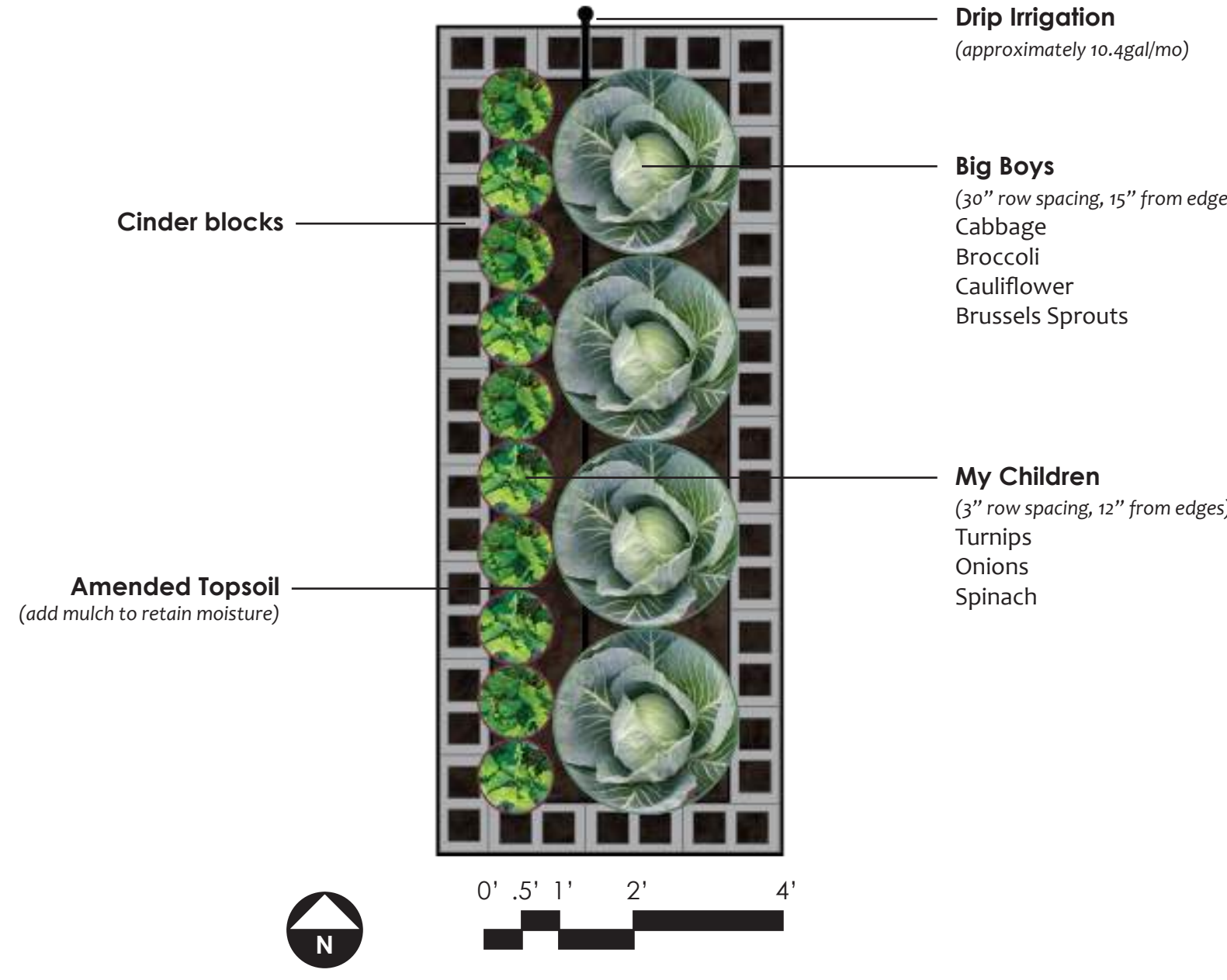
SITE OPPORTUNITIES

This site is generally very shaded, being a narrow parcel between two other two story houses. However, it does get a large amount of morning and evening sun at its East and West ends, respectively.

Another noteworthy characteristic is the roof runoff, most of which is put out on the two northern downspouts of the structure. The figures below are representative of the volumes expected from a .5" rain event.



WATER SMART VEGETABLE BOXES



Raised or in-ground vegetable boxes are a simple and effective way to integrate vegetable production into the urban landscape while still maintaining a clean and put-together aesthetic.

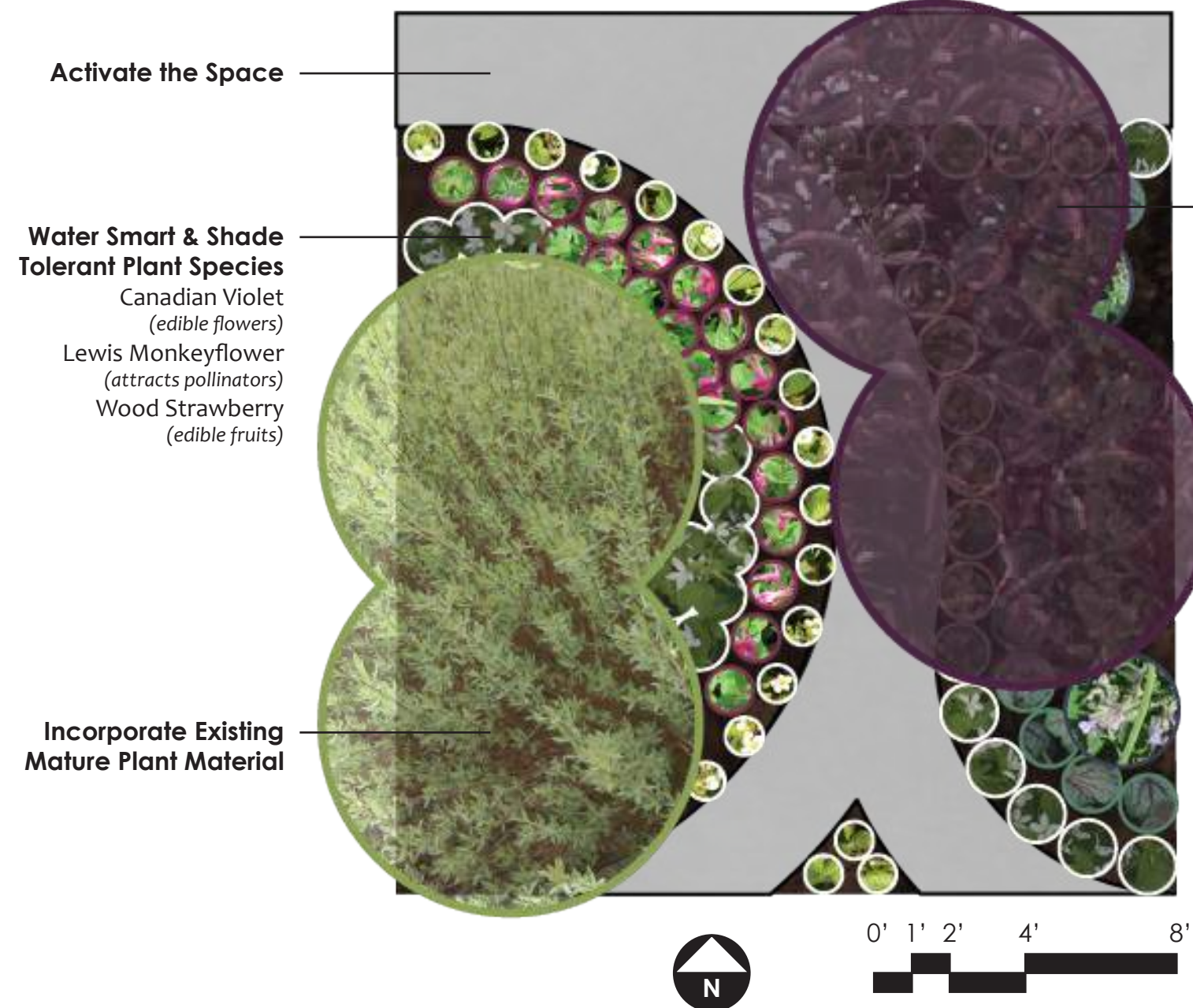
This vegetable box design uses easily accessible materials and a more water-conscious and easily maintained plant pallet to keep costs to the homeowner down while still looking good.

You will need: 4'x11' of space, 44 9x18 cinder blocks, 2 yd³ of topsoil, vegetable seeds or transplants, 10' of drip irrigation line, and approximately 41.6 gallons of water per growing season.

For best sunlight penetration make sure the rows go north-south and, if you have a variety of crops, to plant smaller/shorter crops closer to the direction the sun is mostly coming from (in this case, the west).



URBAN FORAGE BACKYARD



The design of this element strives to provide a place where people can move through at their leisure and peruse some of the more easily accessible edibles.

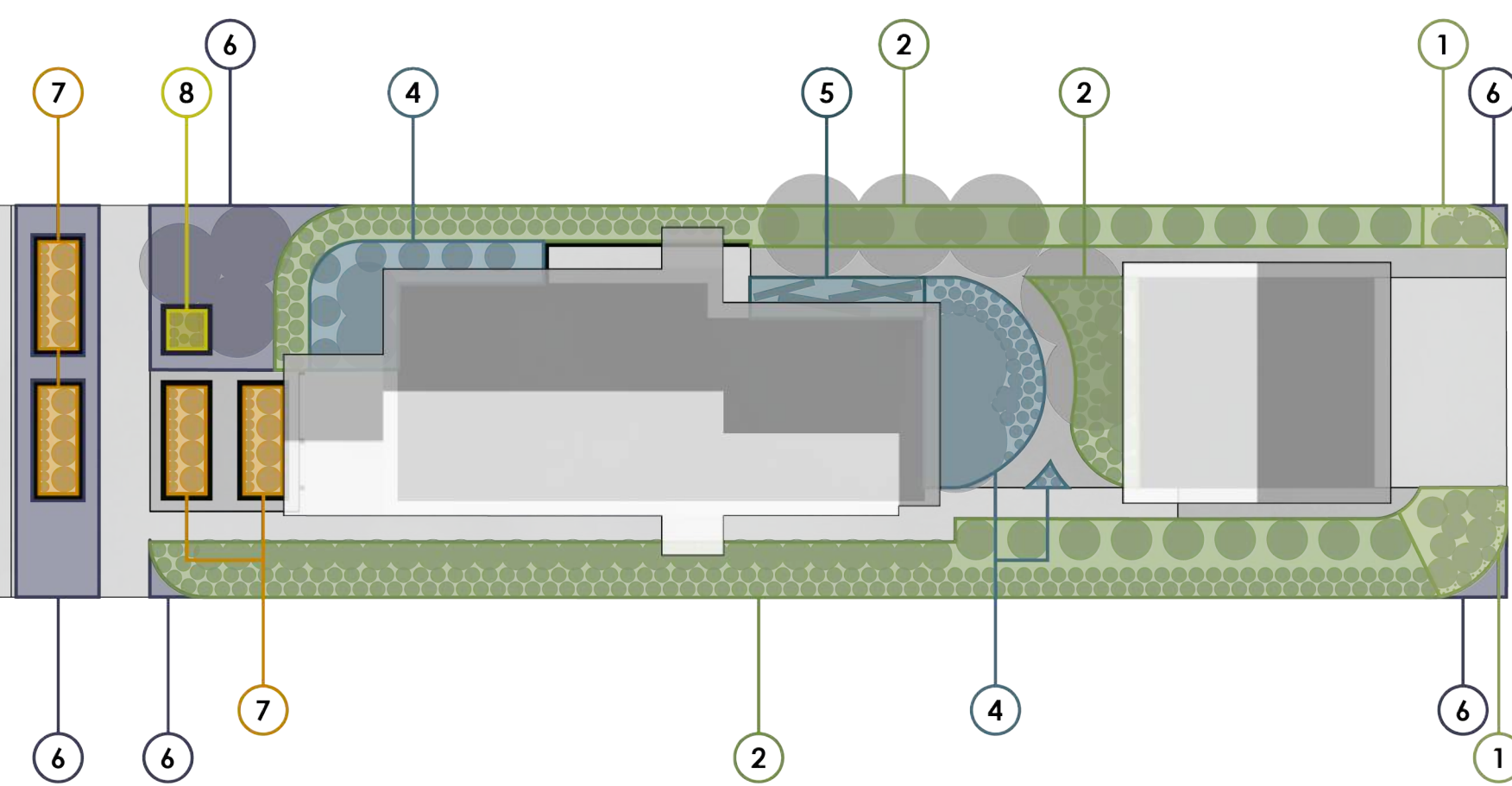
Existing plant material was used as much as possible to reduce the extra irrigation required during establishment and the need to weed the area left for the plant to attain maturity.

Adding tree cover, even in shaded areas will help to reduce water needs of the plants below.



HYDROZONES

The Plant Pallet and hydrozone layout were informed by the site opportunities, specifically the amount of sun and availability of water. Some zones were created for exploratory purposes or to tie in with the surrounding aesthetic vernacular.



PLANT PALLET

	DROUGHT TOLERANT	WATER SMART	CONVENTIONAL
FULL SUN			
PART SHADE			
FULL SHADE			

URBAN FORAGE SIDEYARD

These perennial bed strips along the side of the house provide some additional privacy to the homeowner as well as aesthetic cohesion with some of the other typical plantings in the area, albeit applied to a larger area.

Colorful endcaps to the strips take advantage of the more plentiful sun in addition to providing a pop of brightness.

