



## **LIUPANSHUI MINGHU WETLAND PARK**

Liupanshui, Guizhou Province, China

By Turenscape

2012

LDAR 2257

04/06/2015

Patrick Beals

Yuan Zhang



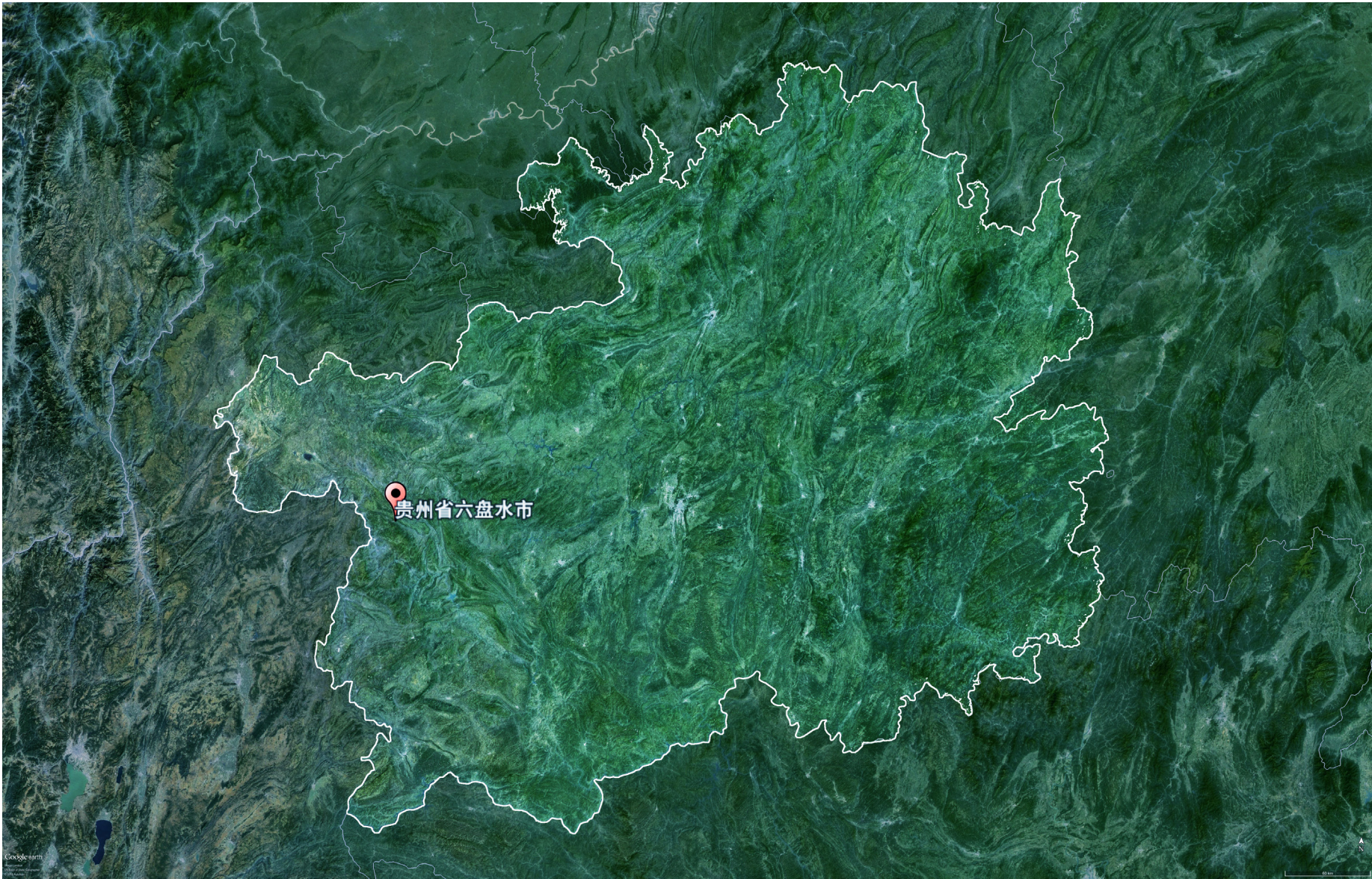
## GEOGRAPHIC LOCATION



Guizhou Province, China



GEOGRAPHIC LOCATION



Guizhou Province, China



# GEOGRAPHIC LOCATION

## Natural Landscape and Culture of Guizhou Province



Terraced Fields



Ethnic Minority People: Buyi, Miao,...



Karst Landforms

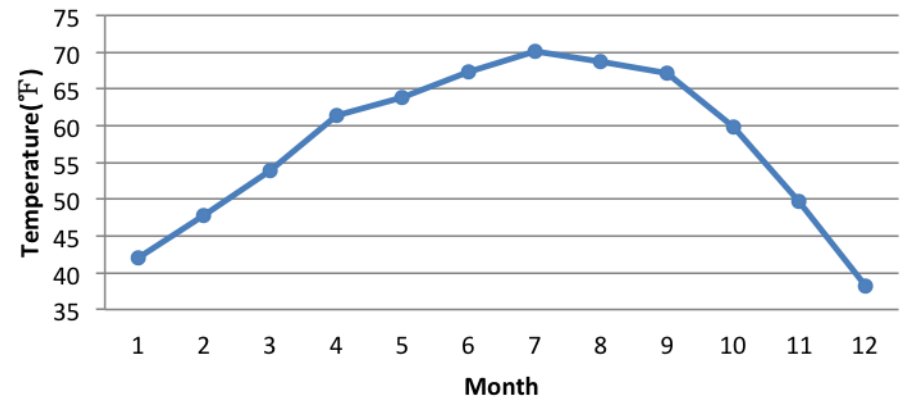


# GEOGRAPHIC LOCATION

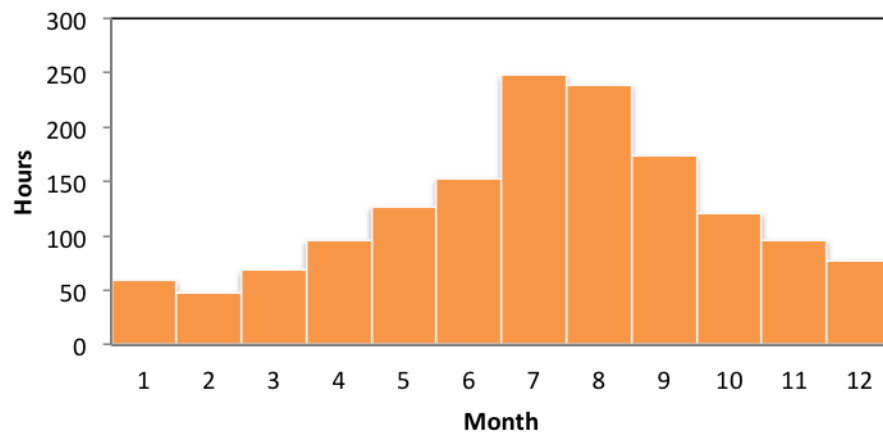
## Climate

The climate in Liupanshui is warm and temperate. There is significant rainfall throughout the year in Liupanshui. Even the driest month still has a lot of rainfall.

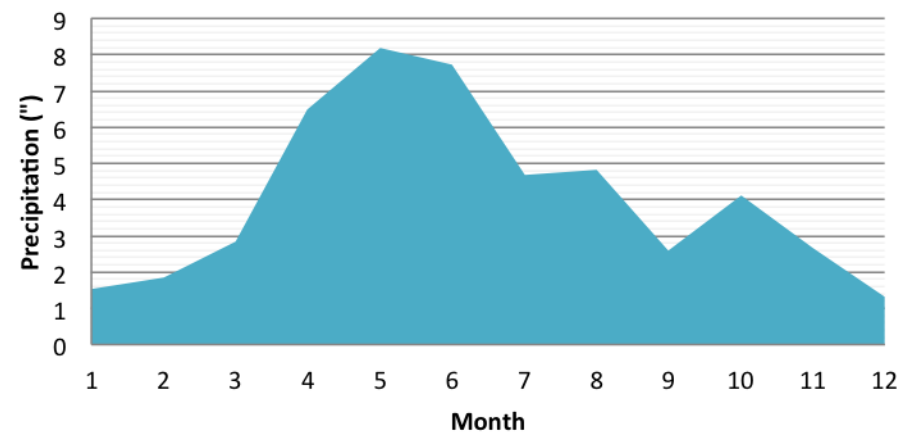
### Monthly Average Temperature



### Sunshine Hours

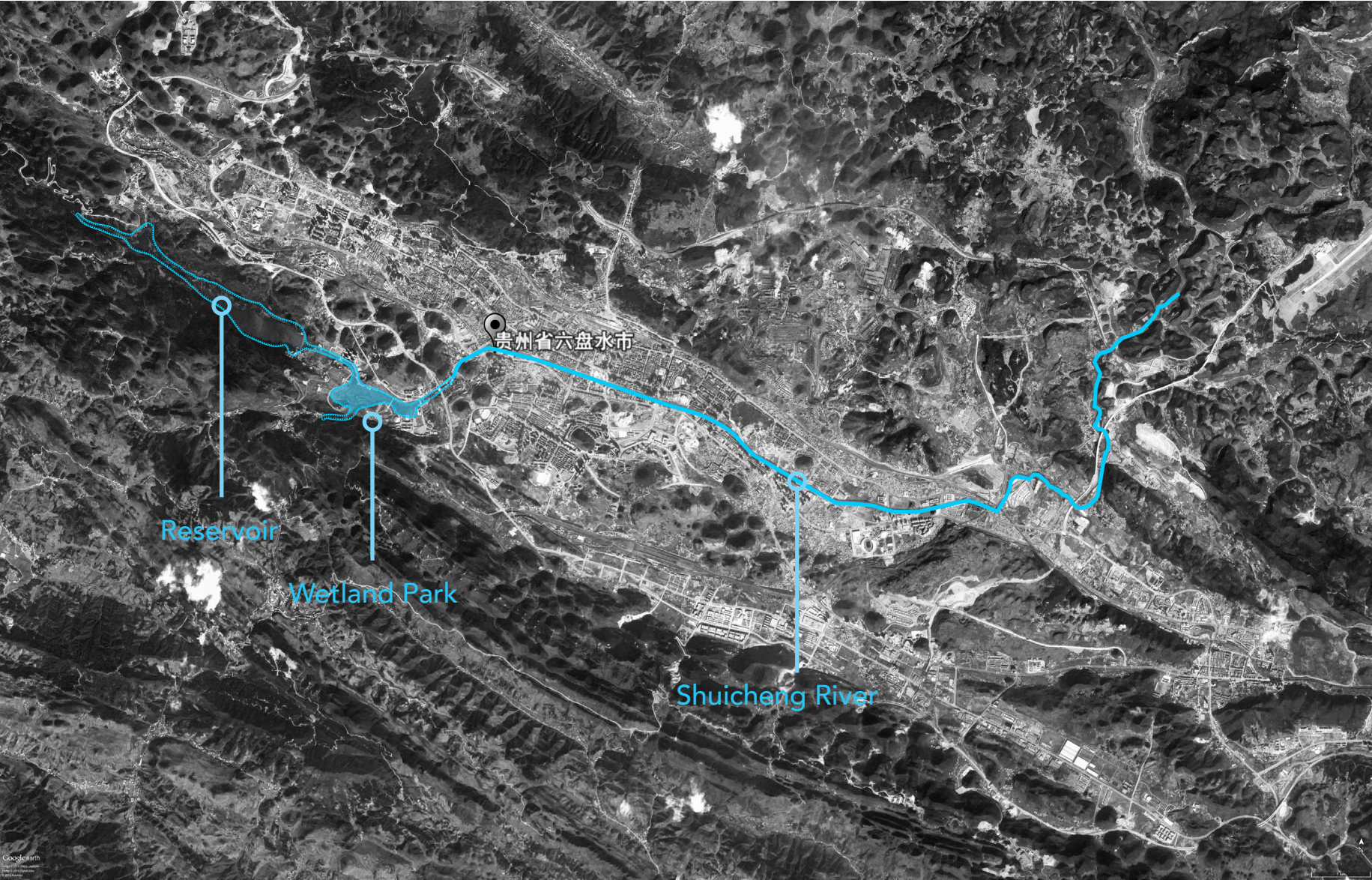


### Monthly Precipitation





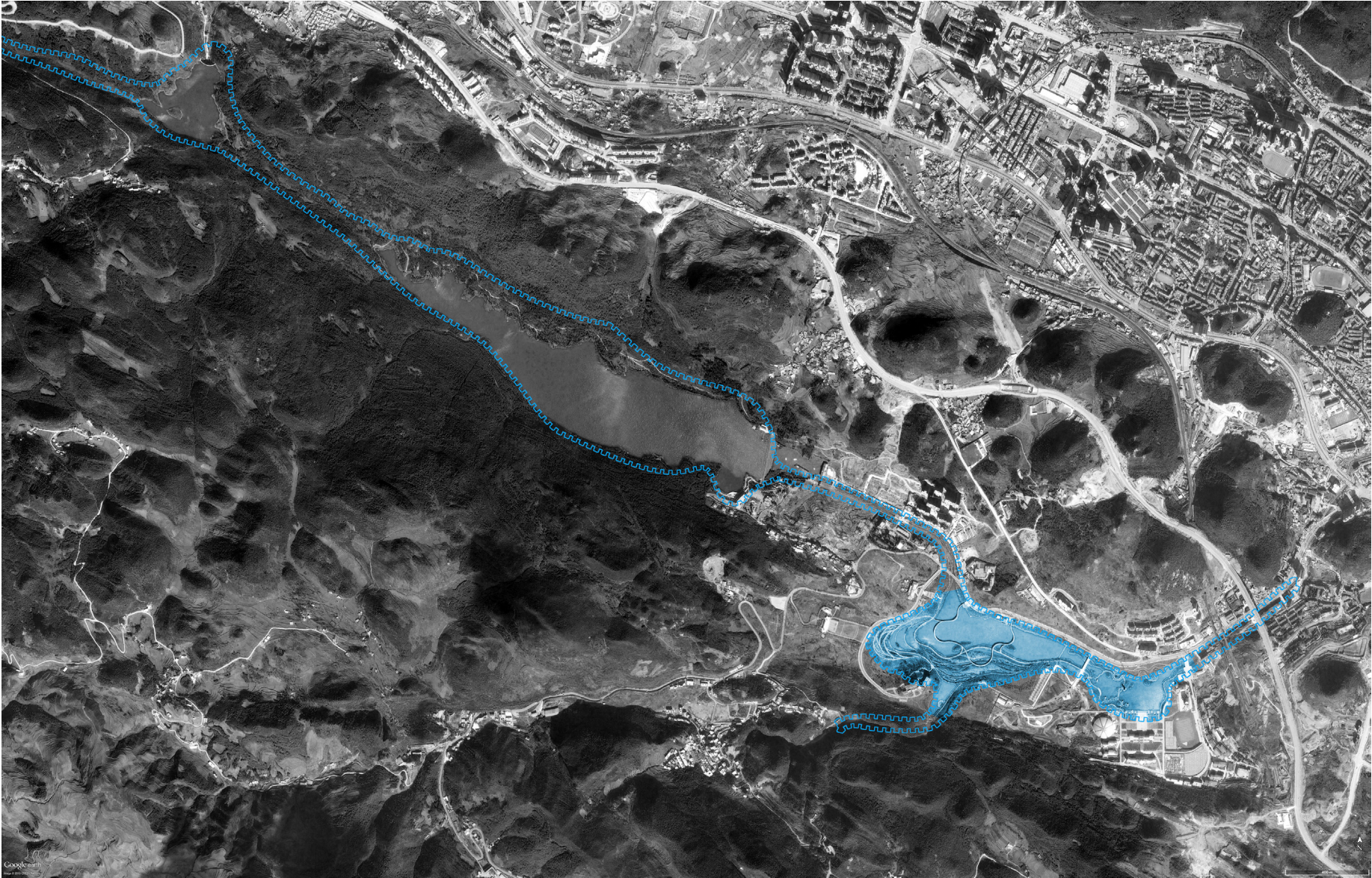
# GEOGRAPHIC LOCATION



Liupanshui, Guizhou Province, China  
Water System



# GEOGRAPHIC LOCATION



Liupanshui Minghu Wetland Park



## GEOGRAPHIC LOCATION



Liupanshui Minghu Wetland Park



# HISTORY OF THE SITE



Left: 1980s -- fields

Lower Left: 2006 Villages with ponds and fields

Lower Right: 2013 Minghu Wetland Park





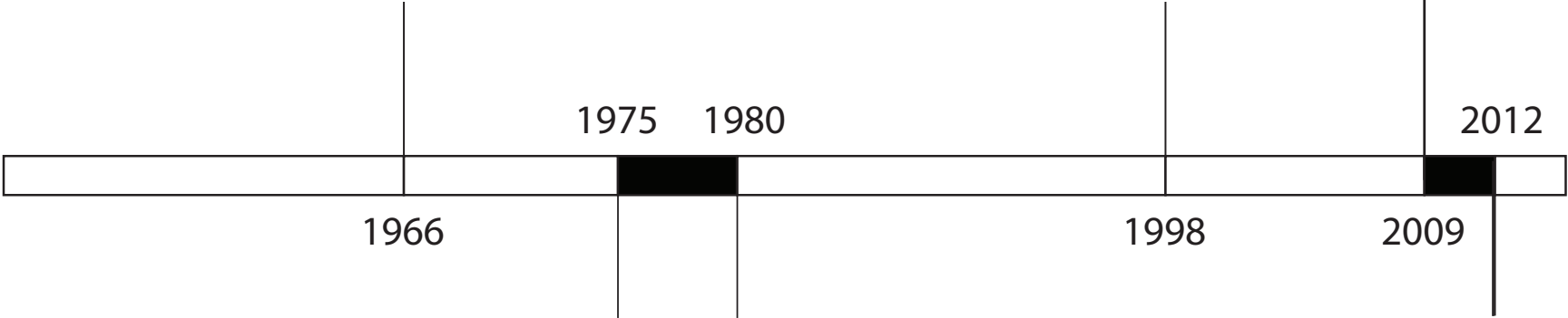
# HISTORY OF THE SITE



*Development Plan For the 3rd Tier Cities:*  
The starting point of urbanization of  
Liupanshui, Guizhou

Ecology & Environment  
Improvement Project

Long-term Flood and Stormwater  
Management Project started



Water and River Management:  
Channelized

Construction Completed





# PROBLEMS OF THE SITE

Trash and Water Contamination



Stormwater Runoff



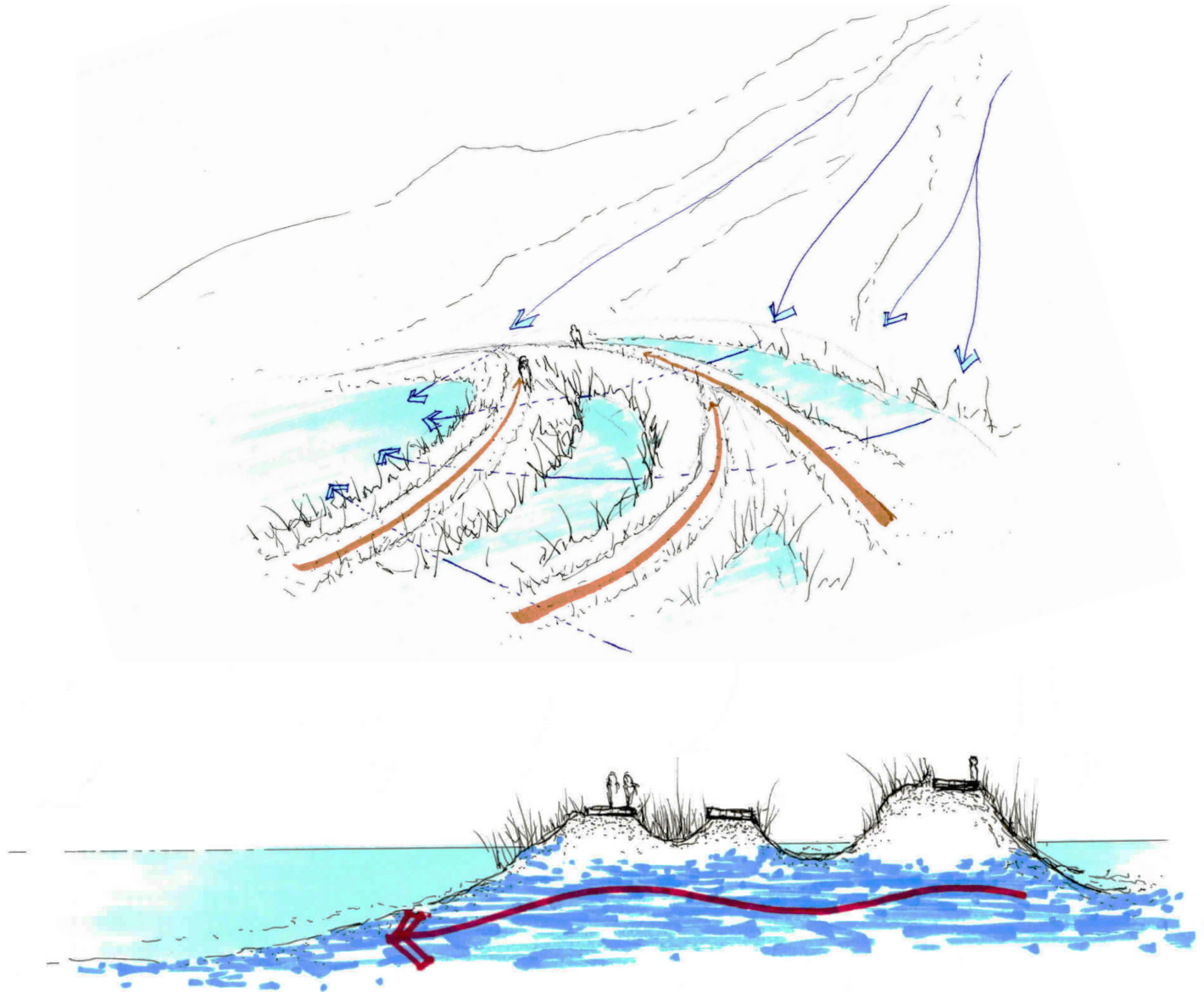
Waste Land



Channelized River



## MAIN STRATEGY



**Filter-Circulation Terrace**



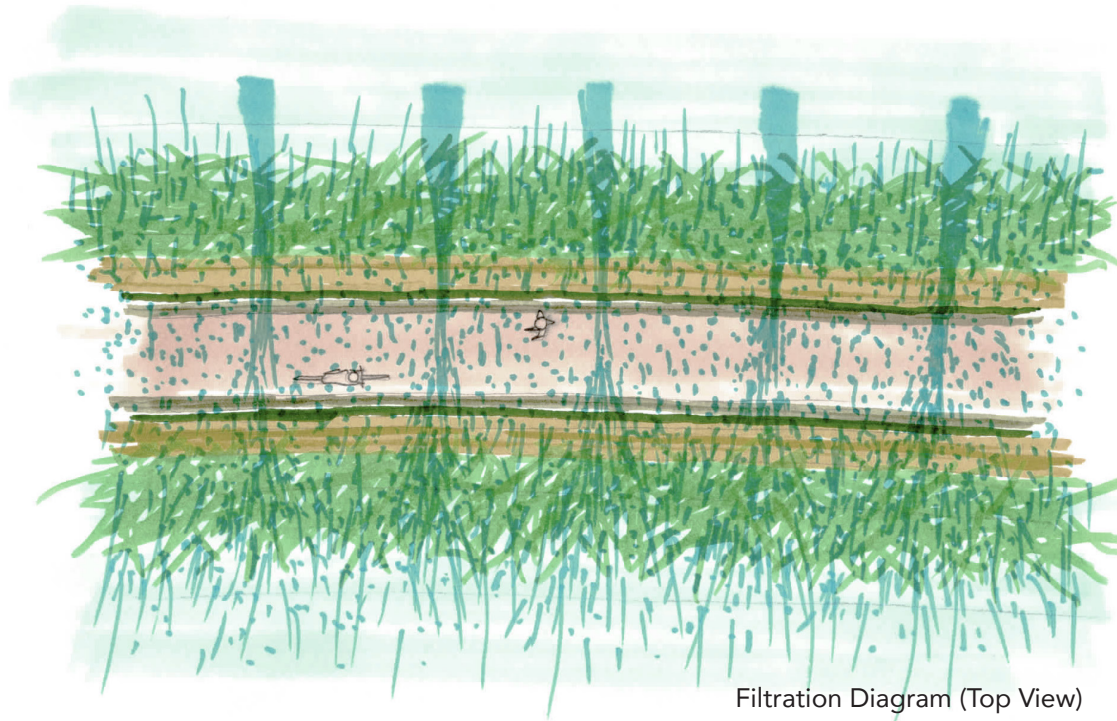
# 1. WATER STRATEGY

## 1. 1 Channelized Riverbank → Soften the Edges



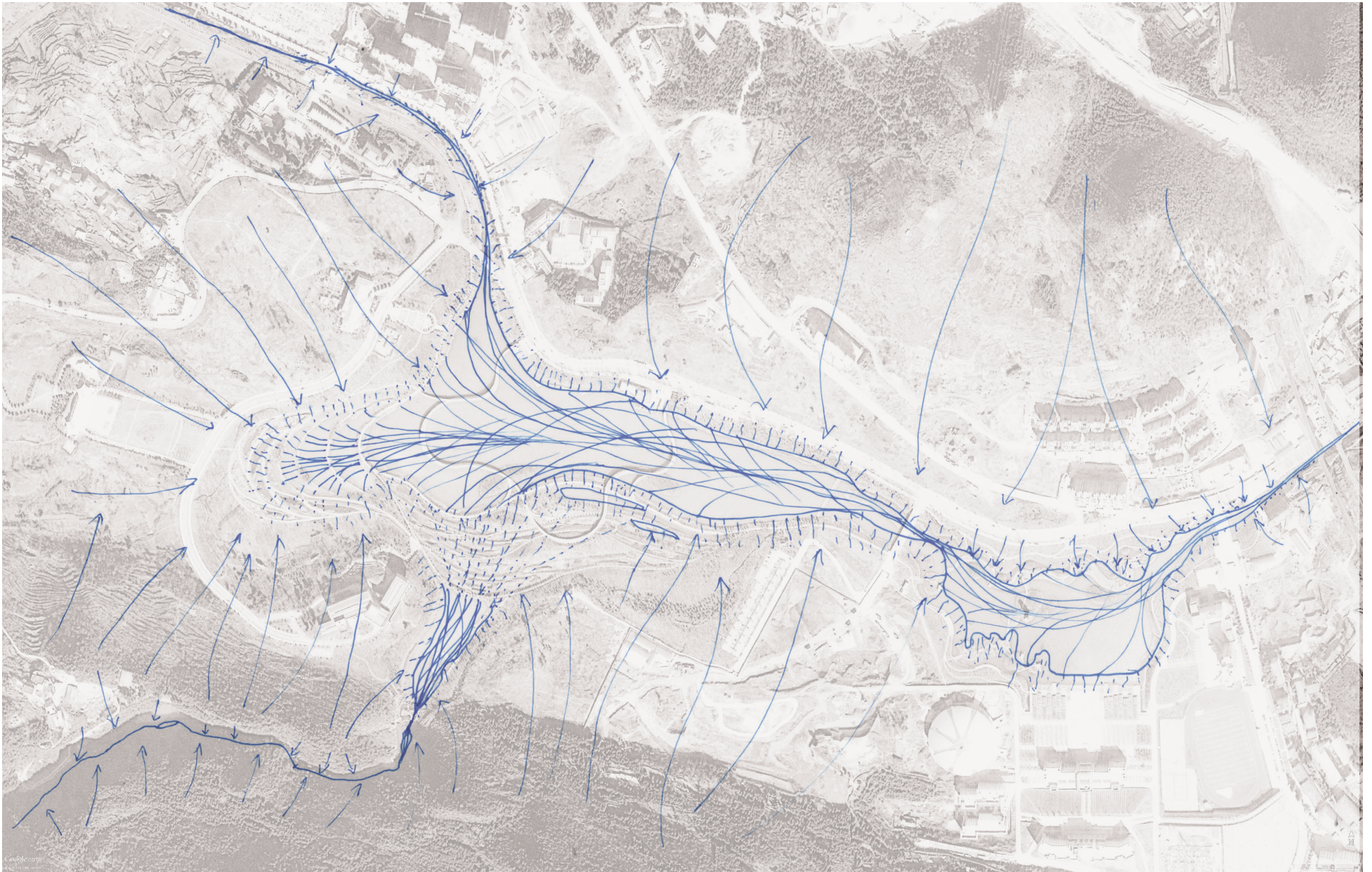
## 1. 2 Artificial Lake as Filtration and Habitat

## 1. 3 Terraced Ponds for Filtration





# 1. WATER STRATEGY



The Water flowing into the city is thus cleaner



## 2. FORM

### 2. 1 Crescent Shape to accept water from every direction



### 2. 2 Inaccessible Bio-Islands for Wild Life Habitats





### 3. PLANTING STRATEGY



Cattail



Cattail



Reed



Thalia



BulRush



BulRush



Arundo  
donax



Rudbeckia



Machilus



Weeping  
Willow



Sassafras



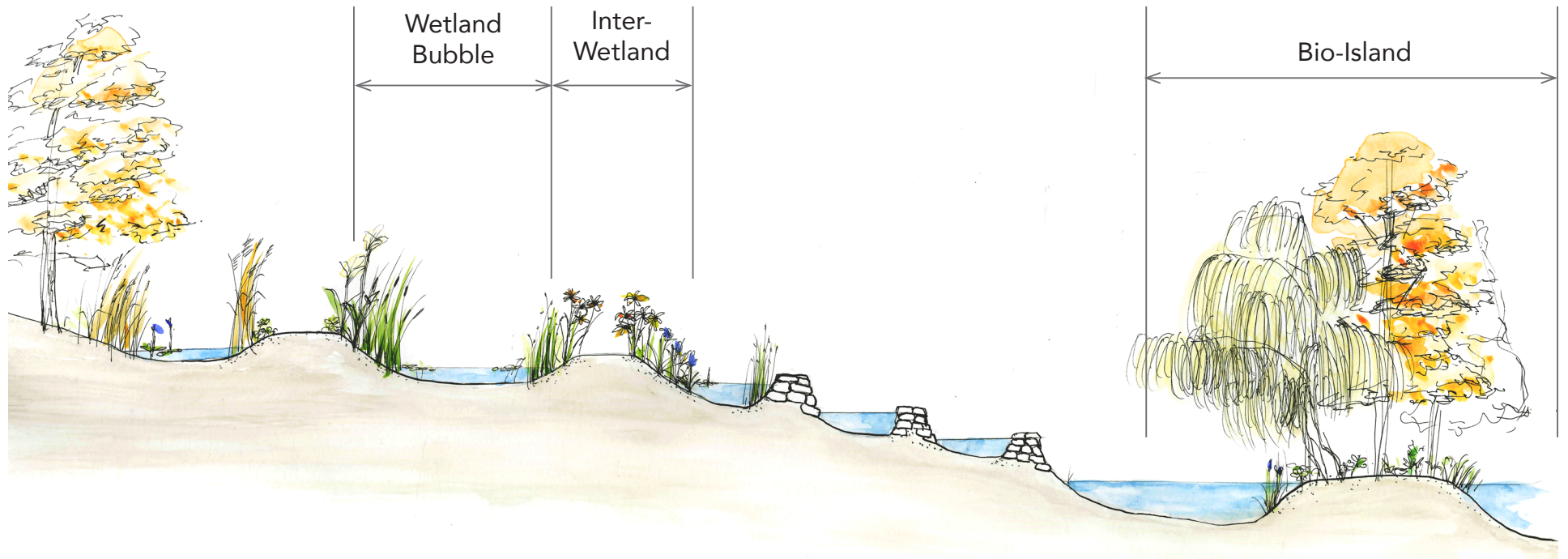
Populus  
yunnanensis



White  
Clover



Reineckea





## 4. MATERIAL STRATEGY

### 4. 1 STEEL -- Industrial Memory

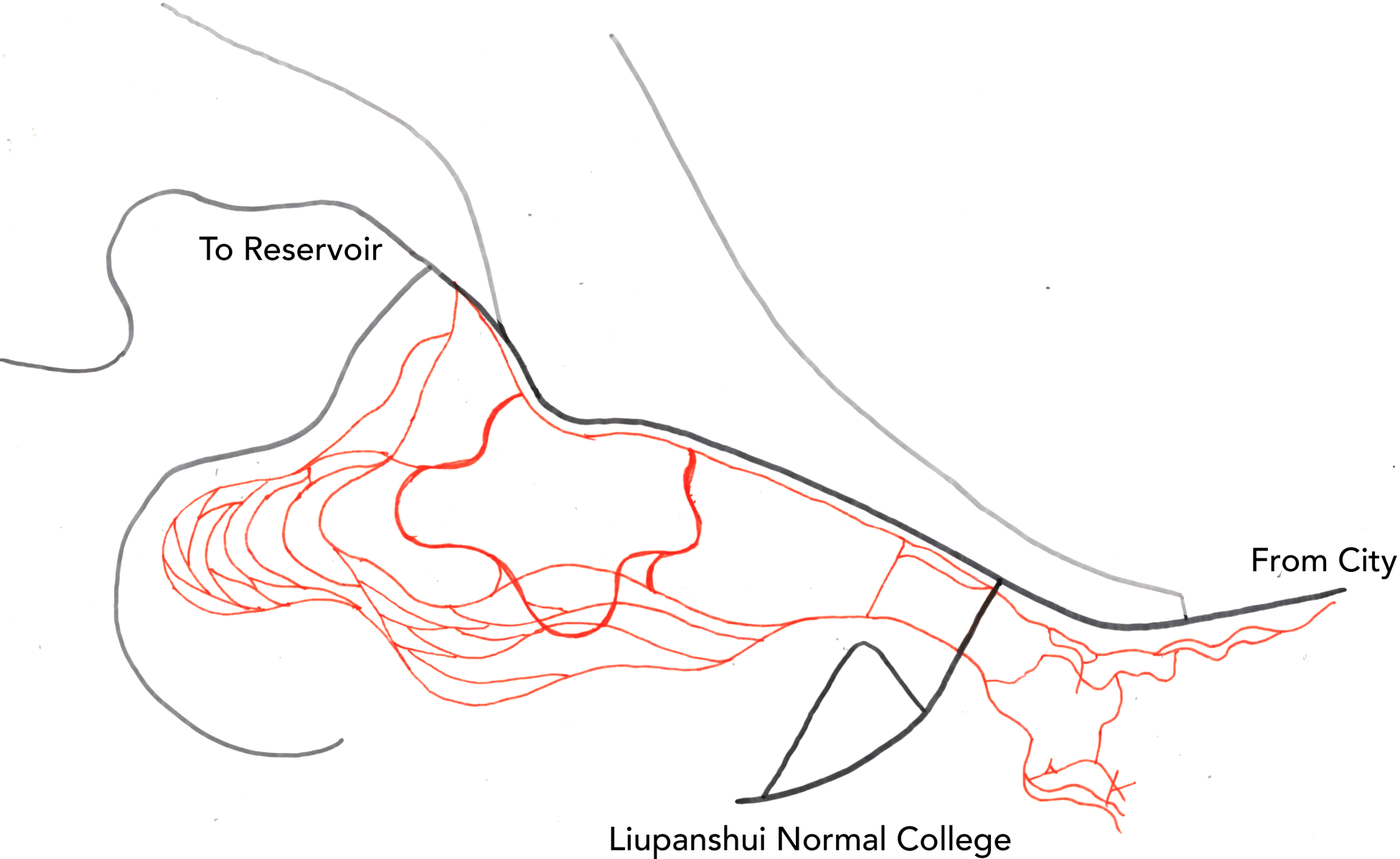


### 4. 2 LOW STONE WALL -- Agricultural Memory





5. CIRCULATION STRATEGY





## 6. VIEWS



Karst Landform as background



## 6. VIEWS



Topography Interaction



## 6. VIEWS



Bio-Islands during flooding



## 7.COMMENT & CRITICISM

评论人：丁海岳 时间：2014-03-12 17:21:48

不足之处，没有结合当地的天气因素，就是这么大的湿地公园没有设置避雨措施，六盘水的天气风雨不定，雨一来基本上是没有课躲雨的地方

This is a large scale park but there is no shelter during rain, and Liupanshui rains a lot.

评论人：马欣 时间：2013-09-29 09:46:46

那是我的家乡，以前那里真的是脏乱差，亲自去看过很多次，人们在公园里都很开心，感觉真的回归大自然了，确实是富有人文关怀，又富有地方精神，只是木质铺装面积偏大，不知道能不能用其他的时间更长久一点的并且效果又比较好的景观的材料代替，这个过了不知道多少年以后换起来工程量还是比较大的。

People are really happy in the park. It really changed the bad situation. But the huge amount of wood deck may lead to maintenance problem after many years.

评论人：Yu Ma 时间：2013-10-06 23:23:42

好奇这个项目的什么时候能恢复到清亮，是不是有一个周期？那是我家乡，经常去。有时候看见鱼都会翻肚皮。

Curious about the water purification cycle. How long does it take to solve the problem? I used to see fish belly-up in the river.